

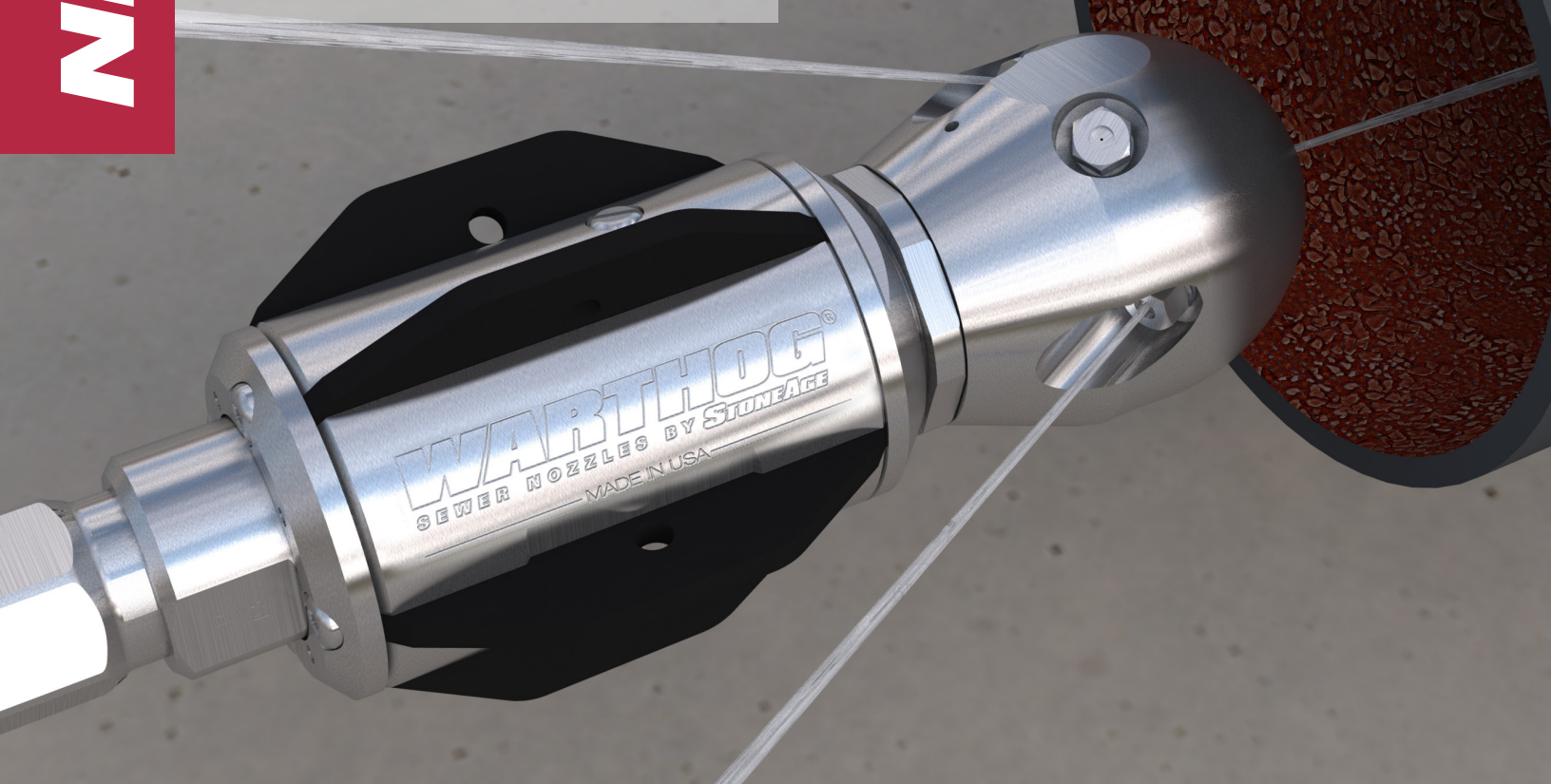
**NEW!**

**6"-18" LINES**



**OPERATING WATERBLASTING EQUIPMENT  
CAN BE POTENTIALLY HAZARDOUS.  
FOLLOW SAFETY GUIDELINES & RECOMMENDATIONS**

**SWITCH FROM CLEANING  
TO FLUSHING WITHOUT  
EVER LEAVING THE PIPE**



**NEW FOR 2017**

## WHR SWITCHER™

The new WHR Switcher is two tools in one. Switch between pulling or cleaning without removing the nozzle from the pipe. When the pump is idled down and brought back to pressure the tool will switch the water flow between two different sets of jets.

### FEATURES:

- Eliminates extra runs needed to swap nozzles – saving water and time
- Run more jobs with one tank of water
- Switch to pulling jets for maximum thrust. Excellent for longer runs, climbing hills, going against the flow and flushing large amounts of material
- Switch to cleaning jets to maximize power for cutting roots and clearing debris, all with out affecting the houses

“

*I used the Switcher non-stop every day, 8 hours a day, and didn't have one problem with it. I've been waiting for something like this.”*

**JASON DEMARTINI  
VALLEJO SANITATION**

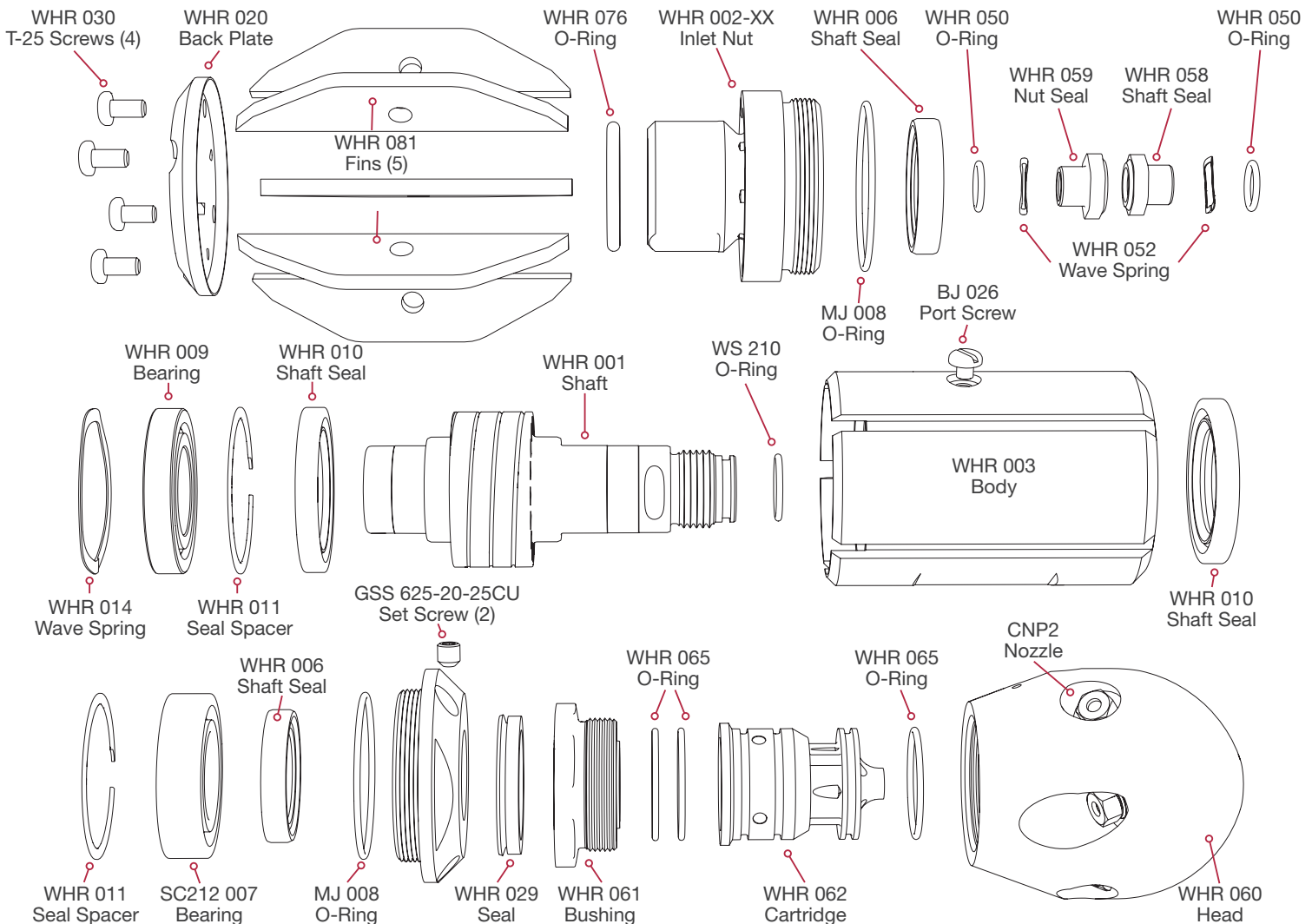
### WHR Switcher Specifications

<b>MAXIMUM PRESSURE</b>	8k psi 550 bar
<b>OPERATING PRESSURE</b>	1500-8k psi 100-550 bar
<b>ROTATION SPEED</b>	150-400 rpm
<b>FLOW</b>	14-50 gpm 60-190 l/min
<b>FLOW RATING</b>	2.6 Cv
<b>PULLING FORCE</b>	30-90 lb 13-41 kg
<b>INLET CONNECTION</b>	3/4 NPT or BSPP
<b>NOZZLE PORTS</b>	5 x 1/8 NPT
<b>TOOL DIAMETER INCL. CENT.</b>	3.625 in. 92 mm
<b>LENGTH</b>	8.26 in. 210 mm
<b>WEIGHT COMPLETE</b>	7.48 lb 3.4 kg

**JETTING CHARTS FOR CUSTOMIZING SEWER TOOLS ARE AVAILABLE BY VISITING  
JETTING.STONEAGETOOLS.COM OR GIVE US A CALL AT 1-970-259-2869**

## WHR SWITCHER

Exploded View - Part Names and Numbers



### Maintenance & Overhaul Kits

#### WHR 600 • SERVICE KIT

- (1) **BJ 048-M** Visc Fluid, 6oz
- (1) **BJ 062-S** Antiseize, 2g
- (1) **GP 049** Grease Syringe
- (2) **GSS 625-20-25CU** Set Screw
- (2) **MJ 008** Nut O-Ring
- (1) **SC212 007** Front Bearing
- (2) **WHR 006** Outer Shaft Seal
- (1) **WHR 009** Rear Bearing
- (2) **WHR 010** Inner Shaft Seal
- (2) **WHR 011** Seal Spacer
- (2) **WHR 050** O-Ring
- (1) **WHR 076** Weep Seal O-Ring
- (4) **WHR 030** Torx Screws
- (1) **WS 210** O-Ring

#### WHR 602 • HP SEAL KIT

- (1) **BJ 062-S** Antiseize, 2g
  - (2) **WHR 050** O-Ring
  - (2) **WHR 052** HP Wave Spring
  - (1) **WHR 058** HP Shaft Seal
  - (1) **WHR 059** HP Nut Seal
- #### WHR 610 • OVERHAUL KIT
- (2) **BJ 026** Port Plug
  - (1) **BJ 048-M** Visc Fluid, 6oz
  - (1) **BJ 062-S** Antiseize, 2g
  - (1) **GP 025-P2SS** Hex Plug
  - (1) **GP 049** Grease Syringe
  - (2) **GSS 625-20-25CU** Set Screw
  - (2) **MJ 008** Nut O-Ring
  - (1) **SC212 007** Front Bearing

- (2) **WHR 006** Shaft Seal – Outer
- (1) **WHR 009** Rear Bearing
- (2) **WHR 010** Shaft Seal – Inner
- (2) **WHR 011** Seal Spacer
- (1) **WHR 014** Bearing Wave Spring
- (4) **WHR 030** Torx Screws
- (2) **WHR 050** O-Ring
- (2) **WHR 052** HP Wave Spring
- (1) **WHR 058** HP Shaft Seal
- (1) **WHR 059** HP Nut Seal
- (1) **WHR 076** Weep Seal O-Ring
- (1) **WS 210** O-Ring
- (1) **WGR 180** Torx L-Wrench

#### WHR 612 • TOOL KIT

- (1) **BA 481** Bearing Removal Tool
- (1) **WGR 180** Torx L-Wrench
- (1) **WHR 181** Removal Press Tube
- (1) **WHR 182** Install Press Tube
- (1) **WHR 183** Hex Tool
- (1) **WHR 184** HP Seal Install Tool
- (1) **WGR 186** HP Seal Puller
- (1) **WHR 187** HP Seal Puller Pin