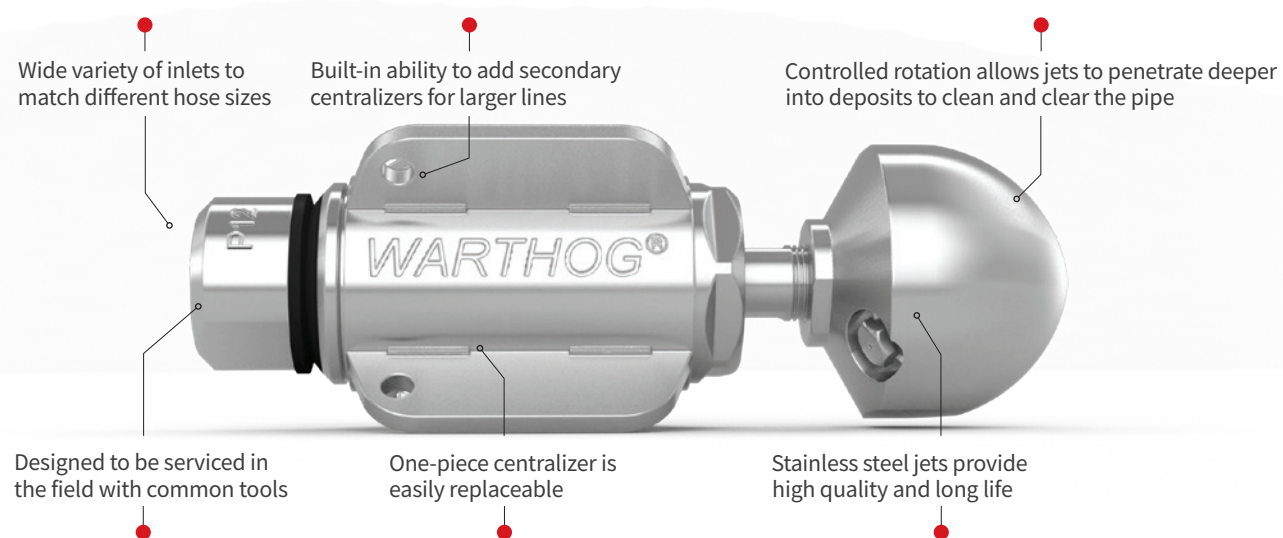


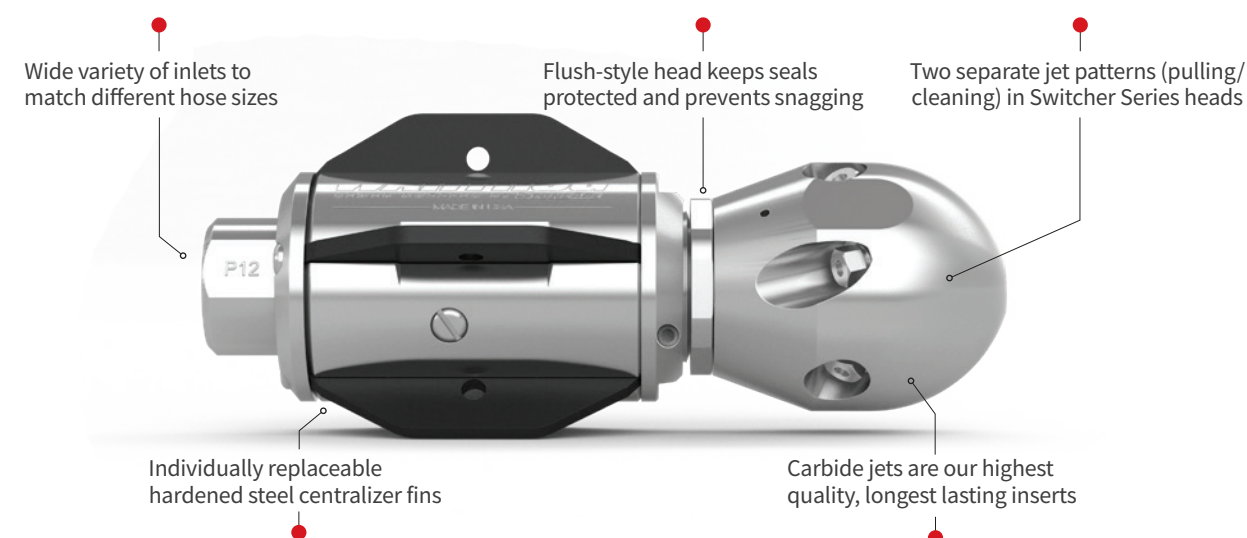
CLASSIC SERIES



CLASSIC SERIES

PG.#	MODEL	NOZZLE	PIPE SIZE	INLET SIZE	FLOW	PRESSURE	FEATURES
8		WV	2-4" 51-102 MM	1/4" NPT OR BSPP	3-8 GPM 11-30 LPM	1200-5K 83-345 BAR	<ul style="list-style-type: none"> • Rotation speed controlled by pressure & flow • Virtually no maintenance
9		WT	3-6" 76-152 MM	3/8" NPT OR BSPP	5-12 GPM 19-45 LPM	1200-5K 83-345 BAR	<ul style="list-style-type: none"> • Carbide wear buttons extend nozzle life • Navigates multiple bends
9		WT-1/2	4-8" 102-203 MM	1/2" NPT OR BSPP	5-21 GPM 19-79 LPM	1200-5K 83-345 BAR	<ul style="list-style-type: none"> • Carbide wear buttons extend nozzle life • Navigates multiple bends • Accommodates higher flow jetters
10		WS	4-8" 102-203 MM	1/2" NPT OR BSPP	8-20 GPM 30-76 LPM	1200-5K 83-345 BAR	<ul style="list-style-type: none"> • 3 Configurations: Standard, Jointed, Rigid • Low maintenance • Descaling head available
11		WH	6-18" 152-457 MM	1/2, 3/4" NPT OR BSPP	10-50 GPM 38-189 LPM	1200-8K 83-552 BAR	<ul style="list-style-type: none"> • One piece replaceable centralizer • Descaling head available
12		WH-P	6-18" 152-457 MM	3/4" NPT OR BSPP	15-50 GPM 57-189 LPM	1200-8K 83-552 BAR	<ul style="list-style-type: none"> • More pulling power • One piece replaceable centralizer • Handles longer hose and steeper inclines
13		WG	8-36" 203-914 MM	1" NPT OR BSPP	50-80 GPM 189-303 LPM	1200-5K 83-345 BAR	<ul style="list-style-type: none"> • One piece replaceable centralizer • Descaling head available • Manhole cleaning option available
14		WG-P	8-36" 203-914 MM	1" NPT OR BSPP	50-80 GPM 189-303 LPM	1200-5K 83-345 BAR	<ul style="list-style-type: none"> • More Pulling power • One piece replaceable centralizer • Handles longer hose and steeper inclines
15		WD	8-36" 203-914 MM	1-1/4" NPT OR BSPP	80-120 GPM 303-454 LPM	1200-5K 83-345 BAR	<ul style="list-style-type: none"> • High flow option up to 120 gpm • One piece replaceable centralizer • Descaling head available

MAGNUM SERIES



MAGNUM SERIES

PG.#	MODEL	NOZZLE	PIPE SIZE	INLET SIZE	FLOW	PRESSURE	FEATURES
16		WHR	6-18" 152-457 MM	1/2, 3/4" NPT OR BSPP	14-50 GPM 53-189 LPM	1200-8K 83-552 BAR	<ul style="list-style-type: none"> • Extended service life • Works in recycled water • Carbide inserts • Hardened steel centralizer • Design reduces getting caught in pipes • Individually replaceable fins • Customizable rotation speed • Optional fin sizes available
17		WGR	8-36" 203-914 MM	1" NPT OR BSPP	50-80 GPM 189-303 LPM	1200-5K 83-345 BAR	
18		WGR-1-1/4	8-48" 203-1219 MM	1-1/4" NPT OR BSPP	80-120 GPM 303-454 LPM	1200-5K 83-345 BAR	

SWITCHER SERIES

PG.#	MODEL	NOZZLE	PIPE SIZE	INLET SIZE	FLOW	PRESSURE	FEATURES
21		WHR-SWT	6-18" 152-457 MM	1/2, 3/4" NPT OR BSPP	14-45 GPM 53-170 LPM	1200-8K 83-552 BAR	<ul style="list-style-type: none"> • Save time and water • 2 Nozzles in 1: Operate in either Pulling or Descaling mode with the same nozzle • Power off the pump to switch between modes while in the pipe • Utilize full pump power in each mode • Jet each mode by pressure/flows separately • Carbide inserts • Hardened steel centralizer fins are individually replaceable • Handles longer hose and steeper inclines
22		WHR-HYBRID-SWT	6-18" 152-457 MM	3/4" NPT OR BSPP	30-50 GPM 114-189 LPM	1200-5K 83-345 BAR	
23		WGR-SWT	8-36" 203-914 MM	1" NPT OR BSPP	50-80 GPM 189-303 LPM	1200-5K 83-345 BAR	
23		WGR-1-1/4-SWT	8-48" 203-1219 MM	1-1/4" NPT OR BSPP	80-120 GPM 303-454 LPM	1200-5K 83-345 BAR	