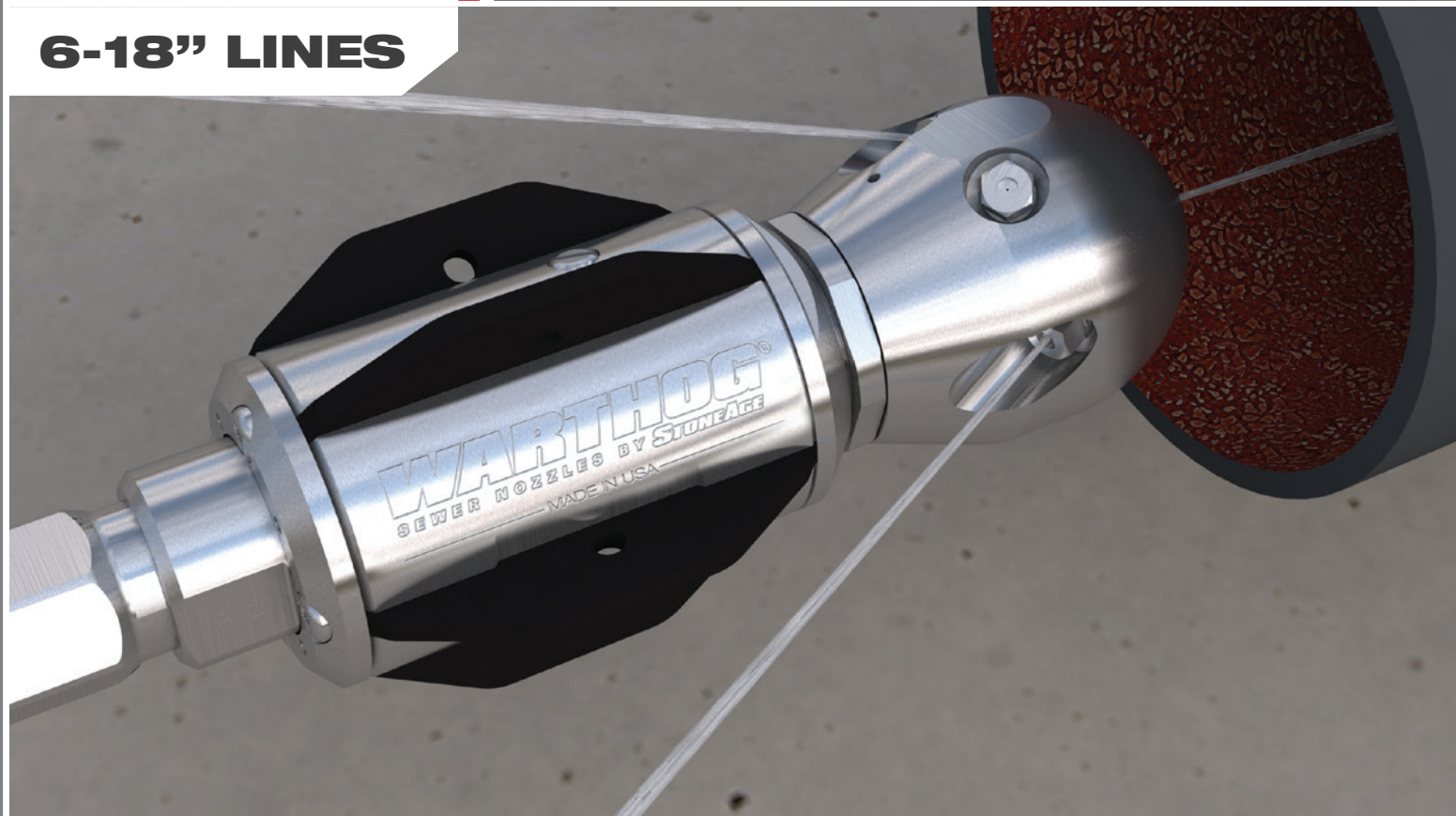


6-18" LINES



WHR SWITCHER

The new WHR Switcher is two tools in one. Switch between pulling or cleaning without removing the nozzle from the pipe. When the pump is idled down and brought back to pressure the tool will switch the water flow between two different sets of jets.

FEATURES:

- Eliminates extra runs needed to swap nozzles – saving water and time
- Run more jobs with one tank of water
- Switch to pulling jets for maximum thrust. Excellent for longer runs, climbing hills, going against the flow and flushing large amounts of material
- Switch to cleaning jets to maximize power for cutting roots and clearing debris, all with out affecting the houses

OUR CUSTOMERS SUCCEED

“ I used the Switcher non-stop every day, 8 hours a day, and didn't have one problem with it. I've been waiting for something like this.”

JASON DEMARTINI – VALLEJO SANITATION

WHR SWITCHER

6-18" Lines (152-457 mm)

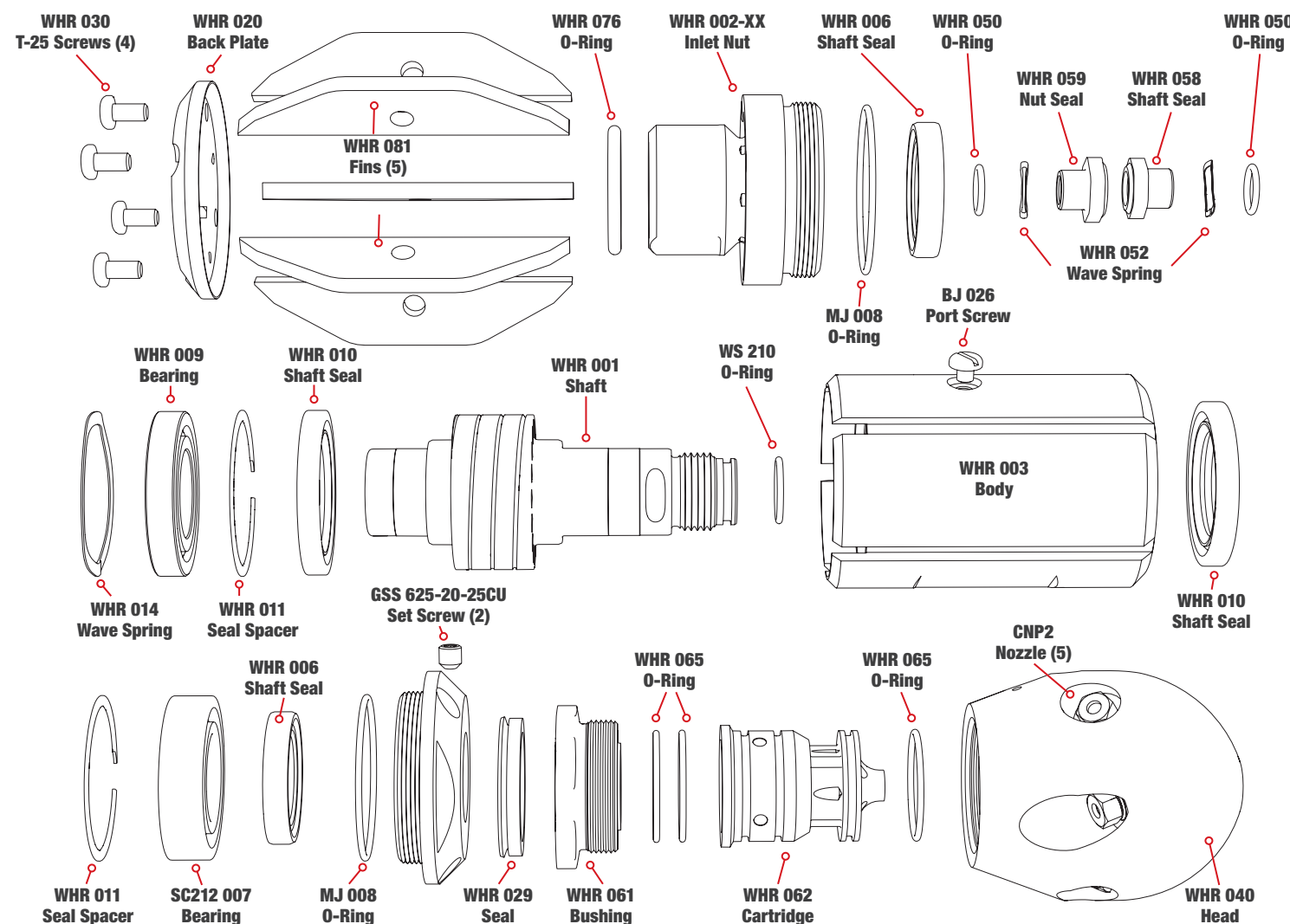
Up to 5k psi (350 bar)
14-30 gpm Flows (60-114 l/min)
Two Inlet Options Available

WHR Magnum Specifications

MAXIMUM PRESSURE	5k psi 350 bar
OPERATING PRESSURE	1200-5k psi 83-350 bar
ROTATION SPEED	150-400 rpm
FLOW	14-30 gpm 60-114 l/min
FLOW RATING	2.6 Cv
PULLING FORCE	30-90 lb 13-41 kg
INLET CONNECTION	1/2 NPT or BSPP, 3/4 NPT or BSPP
NOZZLE PORTS	5 x 1/8 NPT
TOOL DIAMETER INCL. CENT.	3.625 in. 92 mm
LENGTH	8.26 in. 210 mm
WEIGHT	7.48 lb 3.4 kg

WHR SWITCHER

EXPLODED VIEW - PART NAMES AND NUMBERS



Maintenance & Overhaul Kits

WHR 600 • SERVICE KIT

- (1) BJ 048-M Visc Fluid, 6oz
- (1) BJ 062-S Antiseize, 2g
- (1) GP 049 Grease Syringe
- (2) GSS 625-20-25CU Set Screw
- (2) MJ 008 Nut O-Ring
- (1) SC212 007 Front Bearing
- (2) WHR 006 Outer Shaft Seal
- (1) WHR 009 Rear Bearing
- (2) WHR 010 Inner Shaft Seal
- (2) WHR 011 Seal Spacer
- (2) WHR 050 O-Ring
- (1) WHR 076 Weep Seal O-Ring
- (4) WHR 030 Torx Screws
- (1) WS 210 O-Ring

WHR 602 • HP SEAL KIT

- (1) BJ 062-S Antiseize, 2g
- (2) WHR 050 O-Ring
- (2) WHR 052 HP Wave Spring
- (1) WHR 058 HP Shaft Seal
- (1) WHR 059 HP Nut Seal
- (2) WHR 006 Shaft Seal – Outer
- (1) WHR 009 Rear Bearing
- (2) WHR 010 Shaft Seal – Inner
- (2) WHR 011 Seal Spacer
- (1) WHR 014 Bearing Wave Spring
- (4) WHR 030 Torx Screws
- (2) WHR 050 O-Ring
- (2) WHR 052 HP Wave Spring
- (1) WHR 058 HP Shaft Seal
- (1) WHR 059 HP Nut Seal
- (1) WHR 076 Weep Seal O-Ring
- (1) WS 210 O-Ring
- (1) WGR 180 Torx L-Wrench

WHR 610 • OVERHAUL KIT

- (2) BJ 026 Port Plug
- (1) BJ 048-M Visc Fluid, 6oz
- (1) BJ 062-S Antiseize, 2g
- (1) GP 025-P2SS Hex Plug
- (1) GP 049 Grease Syringe
- (2) GSS 625-20-25CU Set Screw
- (2) MJ 008 Nut O-Ring
- (1) SC212 007 Front Bearing

WHR 612 • TOOL KIT

- (1) BA 481 Bearing Removal Tool
- (1) WGR 180 Torx L-Wrench
- (1) WHR 181 Removal Press Tube
- (1) WHR 182 Install Press Tube
- (1) WHR 183 Hex Tool
- (1) WHR 184 HP Seal Install Tool
- (1) WGR 186 HP Seal Puller
- (1) WHR 187 HP Seal Puller Pin