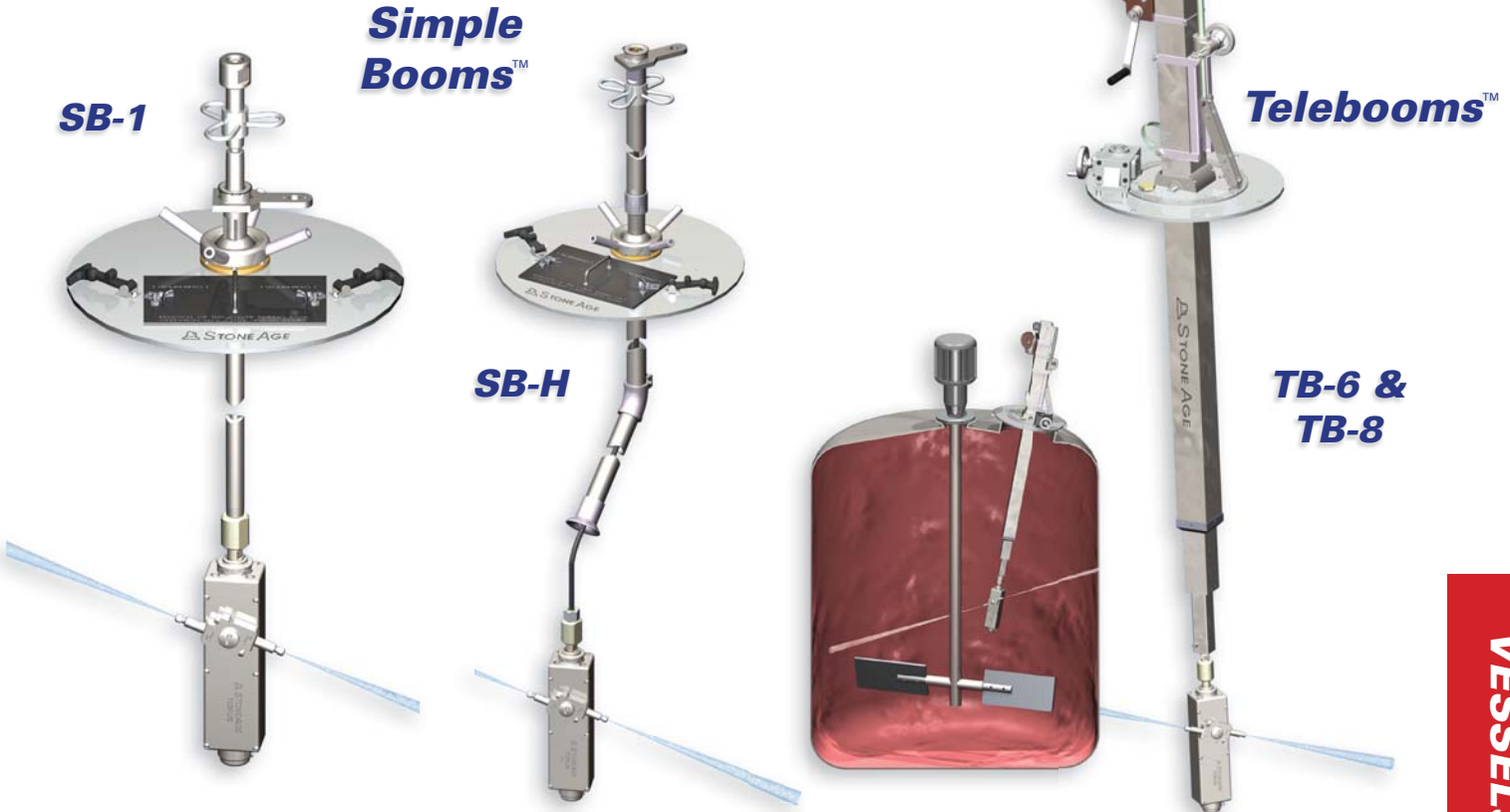


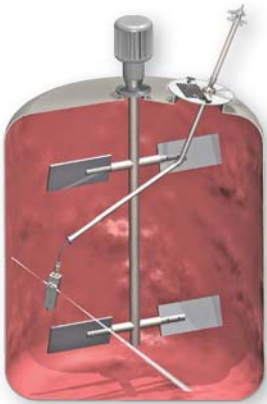
Torus® Positioning Tools

Simple Booms™ and Telebooms™



Simple Booms™

The **Simple Boom™** is an inexpensive and versatile positioner available as a rigid pipe model, the **SB-1**, or a flexible hose model, the **SB-H**. Both are shown in the diagrams above. The **SB 200 Conversion Kit** adapts the rigid model to accept hose.



The **SB-1** model features a rigid pipe coupling, adjustable pipe and ball locks for depth control, and a 75° tilt range. The **SB-H** hose model features adjustable hose and ball locks, 45° hose elbows, and an inspection hatch.

Both models include a 24" aluminum mounting plate for the vessel opening and an inspection hatch for operator visuals.

Telebooms™

The **Teleboom™** features a telescoping reach of up to 19 feet, plus it offers tilt and rotation adjustments. The **Torus®** can be adapted to fit our **Teleboom™** models. Easy to set up and to use, it comes in two different lengths. Note the chart below.

Teleboom™ Specifications

MODEL	TB-6		TB-8	
Maximum Reach	13 ft	4.0 m	19 ft	5.8 m
Collapsed Length	6.5 ft	2.0 m	8.5 ft	2.6 m
Weight	120 lbs	54 kg	130 lbs	55 kg
Inlet Port	3/4 npt		3/4 npt or 3/4 MP	
Flow Capacity	100 gpm	380 lpm	100 gpm	380 lpm
Max. Hose I.D.	3/4 in.	19 mm	3/4 in.	19 mm
Max. Pressure	22k psi	1500 bar	22k psi	1500 bar