

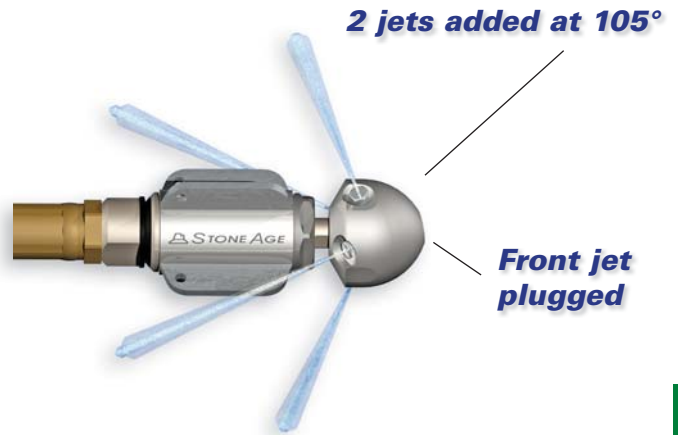
# WARTHOG® Accessories

## Extra Features Enhance Productivity

### Descaling Jets

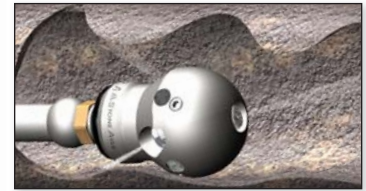
To enhance removal of scale from drain surfaces 105° jet ports can be added to the rotating head. (Not available on the **WT-3/8™** or **WV-1/4™** models.) Tuberculation, corrosion products, soap, scale and minerals respond well to this option.

**Note:** The front port is intentionally plugged to allow more jetting force to be applied to the wall of the pipe. New tools can be purchased with this option or existing heads can be sent to us to be modified.



### Carbide Wear Resistance

We've added a carbide button option to the **WT-3/8™** model, specifically designed to handle demanding applications. Pipes made of cast iron or those that have sand or silt can act as abrasive agents that aggressively wear out the tool. Our carbide buttons add 3 times the life to a standard **WT™** and are available in all offsets.



**SD 100™**

### Soft Dig Heads Tackle Hydro-Excavation

Hydro-Excavation is a rapidly growing technology in the vacuum truck industry, where contractors can utilize their vacuum trucks to replace manual digging. This is a real benefit for companies that need to locate utility lines without the dangers of using heavy industrial equipment. **StoneAge®** designed a simple and inexpensive assembly with two 1/4" npt **Attack Tip™** nozzles and a protective guard installed into a stainless steel head. The head threads directly onto the end of your 3/4" npt pressure gun and allows for safe and effective excavation. The guard prevents abrasive splashback from damaging the stainless steel head. The **Attack Tips™** are replaceable, allowing operators to make adjustments from truck to truck.

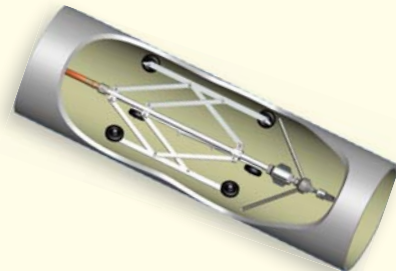
### WARTHOG® Centralizers - Safe and Effective



**Super Centralizer**  
WS 084 - 4.5" diameter



**Super Centralizer**  
WH 085 - 5.6" diameter  
WG 085 - 6.9" diameter



**6-Wheel Adjustable Centralizer**  
For the WG-1™ & WD 1-1/4™  
WG 286-M-P16  
For 13" to 40" diameters.

SEWER NOZZLES