

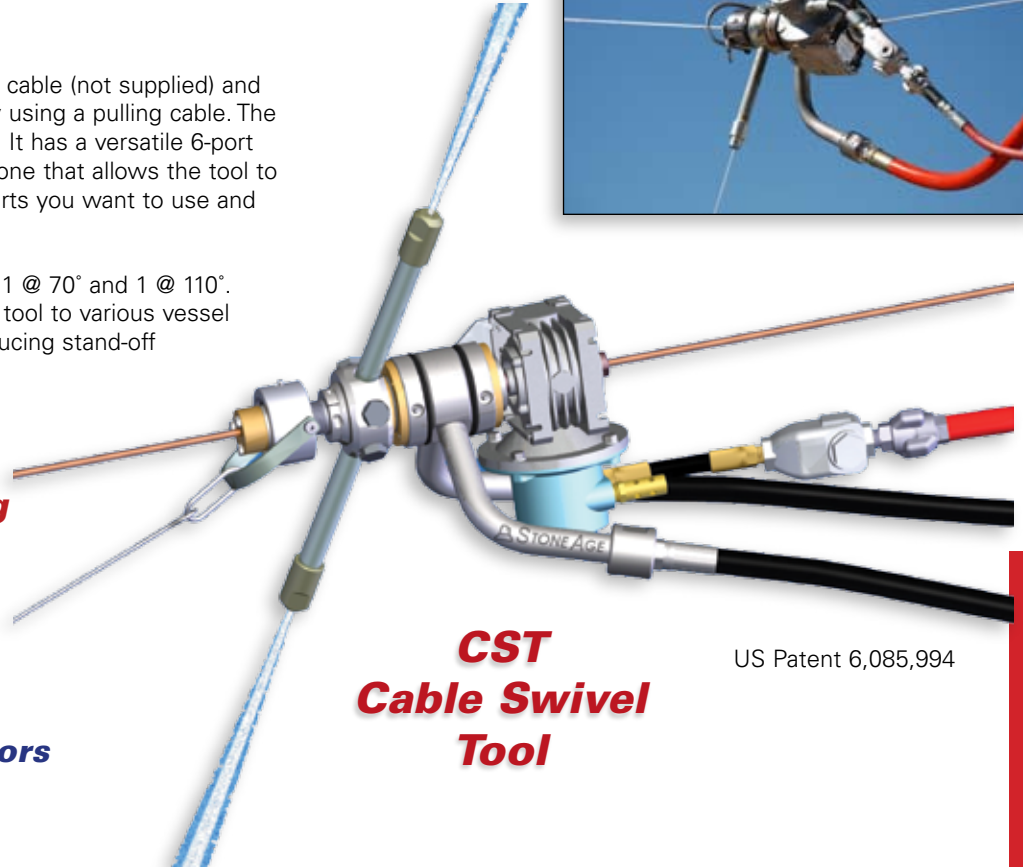
Travelling Cable Swivel Tool

Air-Powered Rotation and 10k psi Power

Patented Hollow Shaft Cable Swivel Tool

The **CST** slides on a 3/8" stretched cable (not supplied) and is moved along by jet reaction or by using a pulling cable. The rotation is powered by an air motor. It has a versatile 6-port head with varying angles including one that allows the tool to travel by itself. Simply select the ports you want to use and plug the others.

The ports include 2 @ 90°, 2 @ 80°, 1 @ 70° and 1 @ 110°. Extension nipples further adapt the tool to various vessel sizes and improve jet quality by reducing stand-off distance.



CST No-Entry Cleaning

- Direct fired furnaces
- Boilers & re-boilers
- Superheater & economizer sections
- Reformers, precipitators & cokers

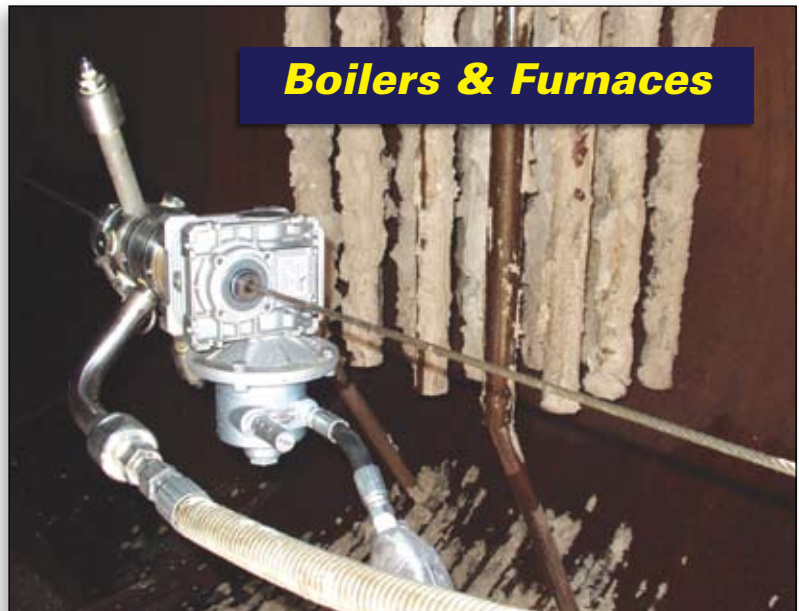
CST Cable Swivel Tool

US Patent 6,085,994

CST Specs

MODEL	CST-Air-P12
Max Pressure	10k psi 700 bar
Flow Capacity	170 gpm 640 lpm
Flow Rating	5.2 Cv
Rotation	5-60 rpm
Rotation Range	360°
Inlet Ports (2)	1 npt
Outlet Ports	6 x 3/4 npt
Length	21 in. 530 mm
Weight	46 lbs 21 kg

Boilers & Furnaces



VESSELS & TANKS