

AUTOSTROKE

Automatic Blockage Sensor for Exchanger Cleaning



OVERVIEW

The AutoStroke is designed to increase efficiency and simplify operation of the AutoBox ABX-2L and ABX-3L in applications with plugged tubes.

The AutoStroke senses when a Banshee nozzle has hit a plug and activates an automatic forward and reverse pecking motion that allows the jets to effectively break through obstructions without operator intervention.

By automatically retracting the Banshee tool from the blockage, the AutoStroke allows the tool to maintain maximum jet rotation to clear the blockage. This produces optimal cleaning and saves wear on your Banshee tools.

KEY FEATURES

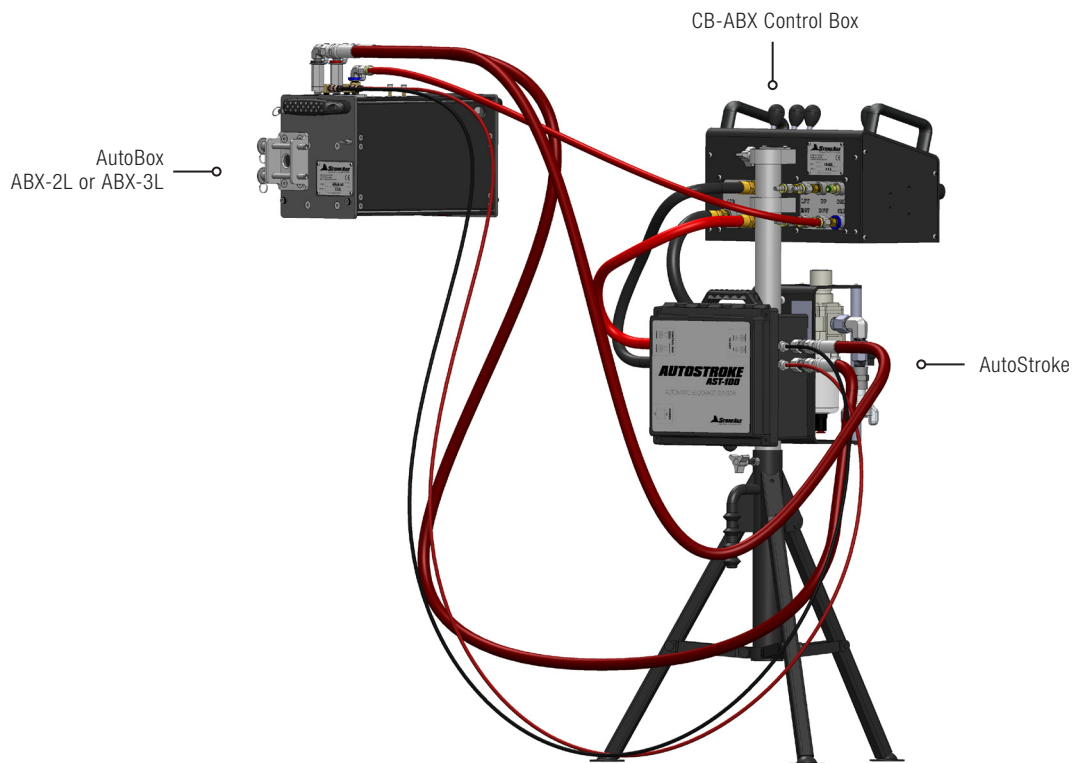
- Quick install to your existing AutoBox ABX-2L or ABX-3L
- Automated forward and reverse tool motion to clear obstructions
- Adjustable sensitivity for changing job conditions
- Adjustable retract distance allows nozzle to regain rotation

SPECIFICATIONS

PART ID	AST-100-2L
Dimensions	11.5 x 10.5 x 7.5 in 351 x 320 x 229 cm
Weight	10 lb 4.5 kg
Umbilical Hose Length	25 ft 762 cm
Hose Force	0-60 lb 0-27 kg
Retract Time	0.05-1.1 sec
Power Source*	C-size batteries

***PNEUMATIC VERSION COMING IN 2017!**

AUTOSTROKE OVERVIEW



A complete AutoStroke package includes the following components:

1. AutoStroke automatic blockage sensor
2. Manifold assembly
3. Two ½ inch air lines
4. Two ¼ inch tubing lines in a nylon sheath

The following items are required for operation:

1. AutoBox ABX-2L or ABX-3L
2. CB-ABX Control Box

Ordering:

PART ID	DESCRIPTION
AST-100-2L	AutoStroke Upgrade Kit

FREQUENTLY ASKED QUESTIONS

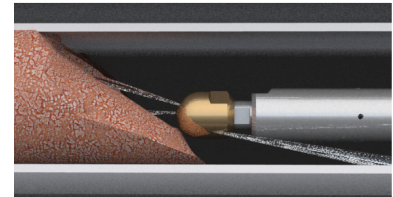
- **How will the AutoStroke help me be more productive?**

The AutoStroke is helpful if you clean heat exchangers with plugged tubes and are experiencing reduced roller or belt life on your AutoBox hose tractor. By automatically retracting the Banshee nozzle from a blockage, the AutoStroke allows the tool head to maintain maximum jet rotation to clear the blockage without operator intervention. This saves wear on AutoBox components and Banshee tools.
- **Is the AutoStroke a stand-alone product?**

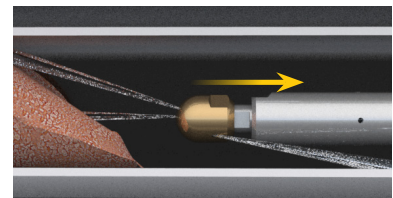
No, the AutoStroke is an AutoBox accessory. It can be used with any size drive rollers and any hose type or size capable of operating with the ABX-2L and ABX-3L.
- **How does the AutoStroke work?**

The AutoStroke detects pressure drop across the air motor and compares it to the value that the operator sets with the sensitivity knob. Certain conditions, such as bends in the tubing, may require more push force before engaging the auto-stroke mechanism.

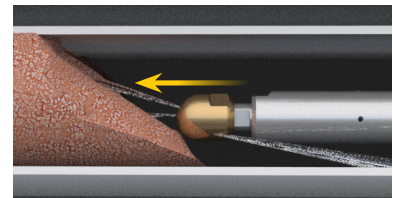
 - If higher push forces are required, the operator can decrease sensitivity.
 - If less push force is required, the operator can increase sensitivity.
 - The retract timer can be adjusted to retract the hoses for a specified time once the established push force is exceeded. This allows the nozzles to regain rotation and continue cleaning.



BANSHEE HEAD CONTACTS BLOCKAGE AND STOPS ROTATING



AUTOSTROKE 'SENSES' BLOCKAGE AND PULLS HOSE BACK SLIGHTLY TO REGAIN HEAD ROTATION



HEAD REGAINS NORMAL ROTATION AND HOSE FEED CONTINUES

PRIMARY MAINTENANCE REQUIREMENTS

- Keep air line ends clean and capped.
- Keep spare batteries on hand. Batteries should last 1-2 weeks at minimum.
- Keep AutoStroke indoors when not in use.

Visit our website for more information, including tool videos and manuals:

WWW.STONEAGETOOLS.COM