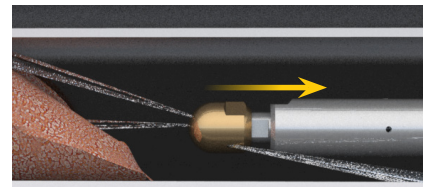
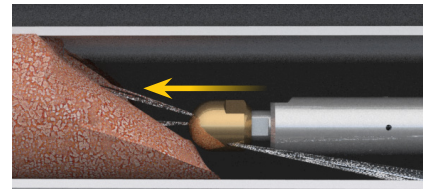


**BANSHEE HEAD CONTACTS BLOCKAGE AND STOPS ROTATING**



**AUTOSTROKE 'SENSES' BLOCKAGE AND PULLS HOSE BACK SLIGHTLY TO REGAIN HEAD ROTATION**



**HEAD REGAINS NORMAL ROTATION AND HOSE FEED CONTINUES**

**NEW  
UPDATES FOR 2017**

# AUTOSTROKE™

The AutoStroke is designed to increase efficiency of the AutoBox ABX-2L and ABX-3L in applications with plugged heat exchanger tubes.

The AutoStroke senses when a Banshee nozzle has hit a plug and activates an automatic forward and reverse pecking motion that allows the jets to effectively break through obstructions without operator intervention. This produces optimal cleaning and saves wear on your Banshee tools.

## FEATURES:

- Quick install to your existing AutoBox ABX-3L or ABX-2L
- Automated forward and reverse tool motion to clear obstructions
- Adjustable sensitivity for changing job conditions
- Adjustable retract distance allows nozzle to regain rotation
- Battery and pneumatic power options

## SPECIFICATIONS

<b>DIMENSIONS</b>	14.0 x 10.5 x 7.5 in. (351 x 320 x 229 cm)
<b>WEIGHT</b>	18 lb (8.2 kg)

### NEW COMPATIBLE WITH ABX-3L

By automatically retracting the Banshee tool from the blockage, the AutoStroke allows the tool head to maintain maximum jet rotation to clear the blockage.

**STONEAGE®**  
ENGINEERING THE POWER OF WATER  
1-866-795-1586 · WWW.STONEAGETOOLS.COM