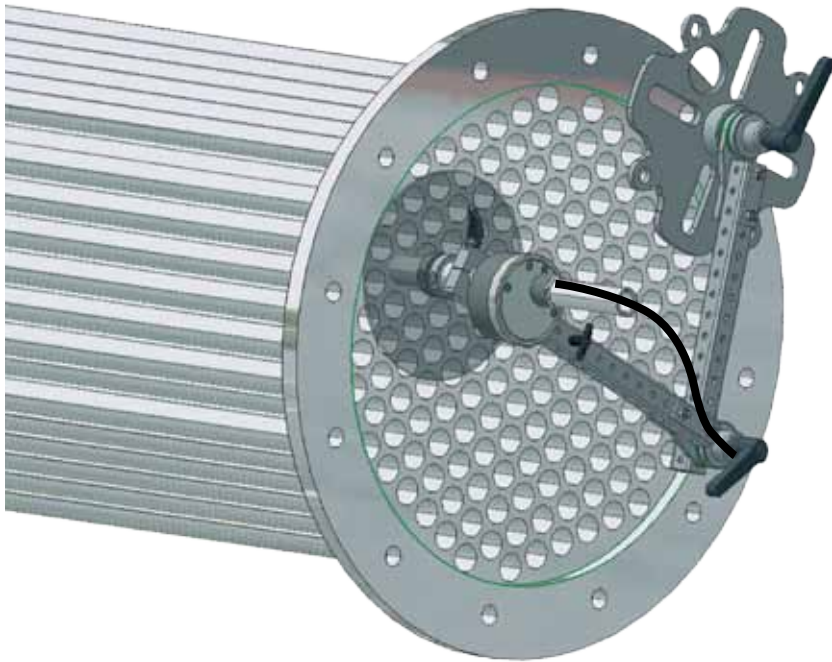


Flex Lance Safety Device (Also called a "Chicken Wing")



With safety as the primary consideration, the **Flex Lance Safety Device** was designed to protect the operator from a flex lance exiting a tube sheet during cleaning operations. It can easily be used for both vertical and horizontal applications and its wide range of adjustment will accommodate different sizes of tube sheets. Durable construction is of galvanized steel and anodized aluminum with a Lexan splash guard.

The **Flex Lance Safety Device** incorporates a rotary magazine, which contains lance stops for six (6) different lance sizes in one easy to handle **Insert**.

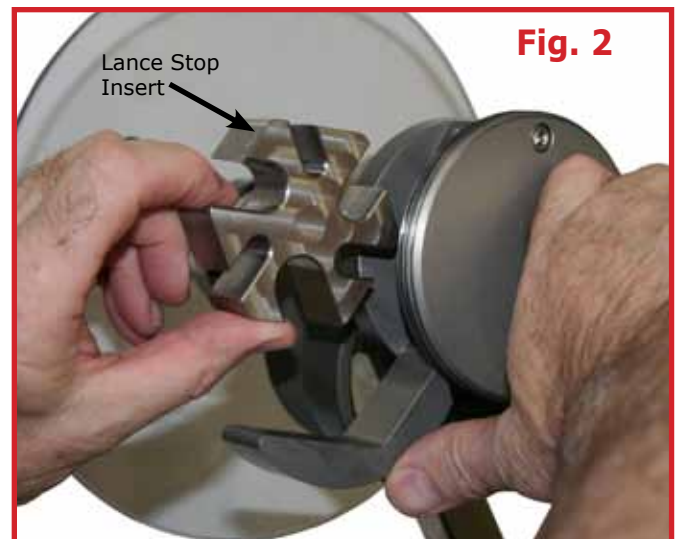
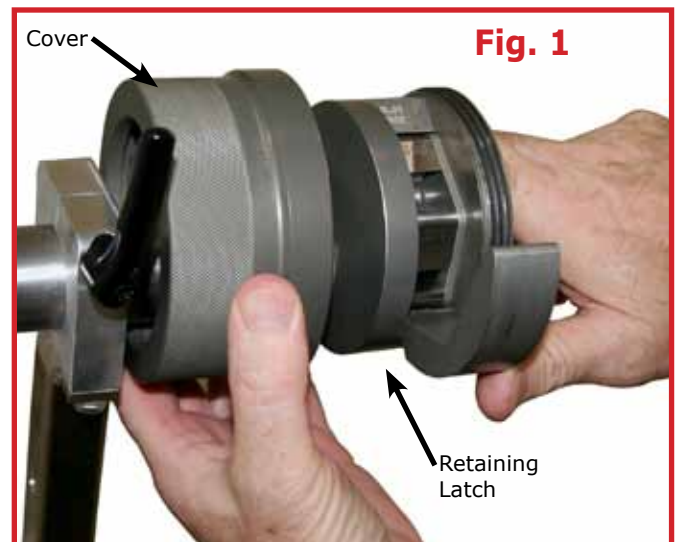
To change the stop size, unscrew the **Cover** and slide it clear of the device. This will allow the **Retaining Latch** to swing down (see Fig. 1), giving access to the **Lance Stop Insert**, which can be removed (see Fig. 2).

Install the lance through the **Lance Guide Tube** and the **Lance Extension Tube**.

Select the required size of the lance stop and reinstall the **Lance Stop Insert**.

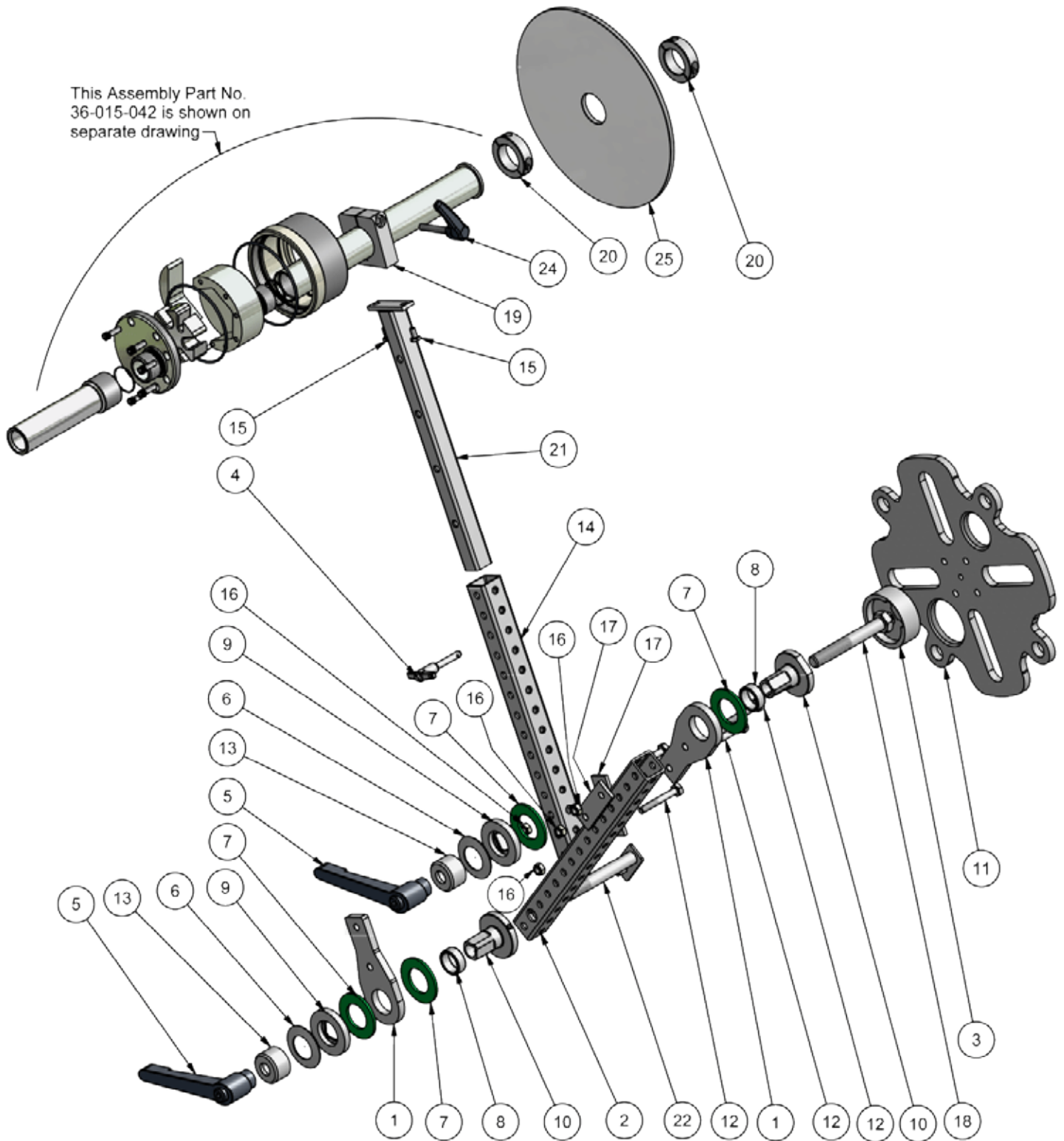
The size of the lance stop installed will be seen engraved on the Lance Stop Insert at the top of the opening.

Close the **Retaining Latch** and replace the **Cover**.



Safety Check: Test to assure that the lance end fitting and nozzle cannot be pulled out of the Safety Device before applying pressure to the flex lance.

Flex Lance Safety Device "Chicken Wing" #36-015-003 Complete Assembly Parts List

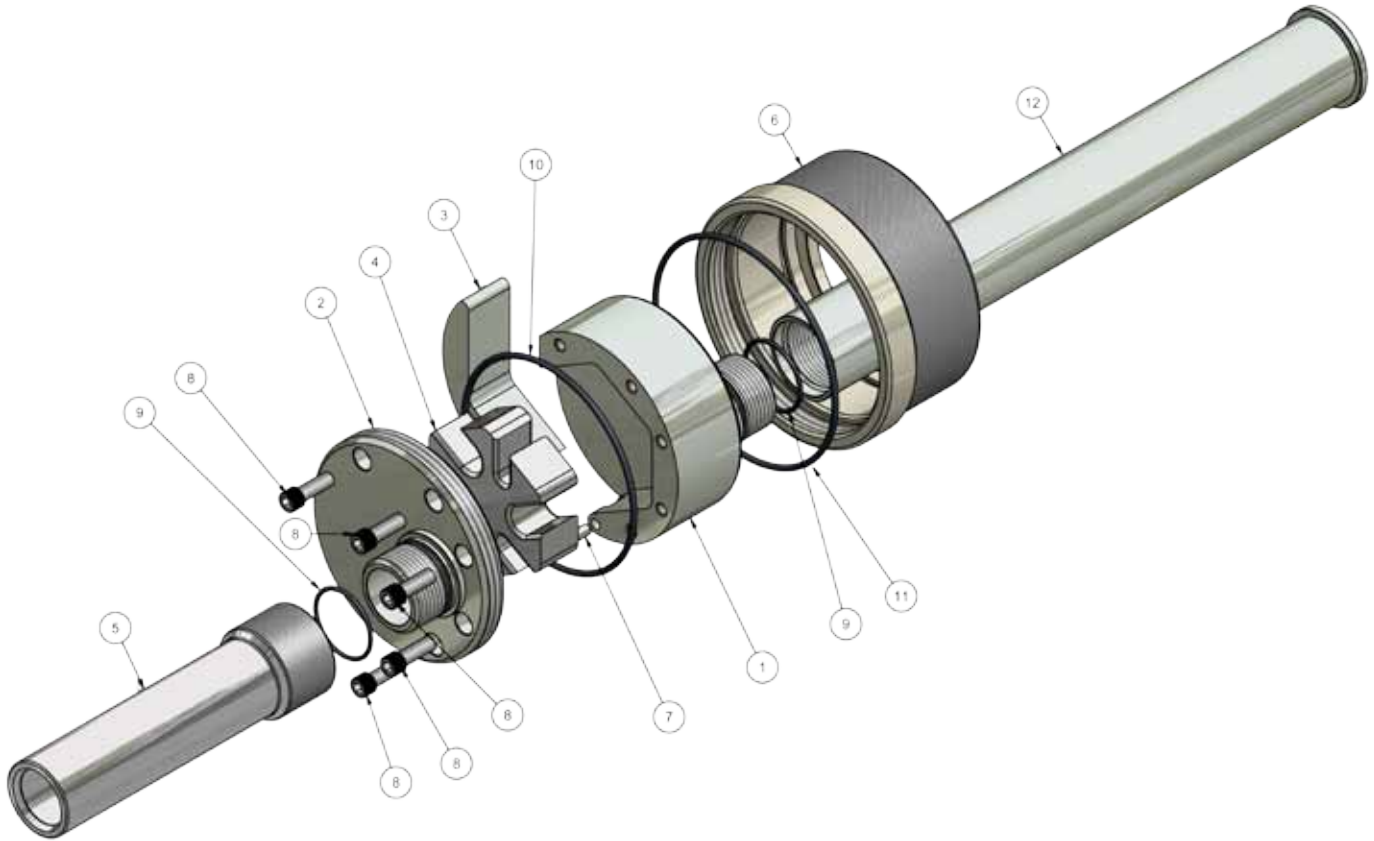


Parts List

Item #	Qty.	Part #	Part Description
1	2	36-015-016	Plate, Pivot Mount
2	1	36-015-018	Weldment, Telespar One
3	1	36-015-025	Adapter, Dalton Clutch Mounting F/Mail Plate
4	1	36-015-027	Extension Locking Pin
5	2	36-015-028	Handle
6	2	36-015-032	Spring Washer
7	4	36-015-033	Washer, Torque Limiter, Fiber
8	2	36-015-034	Bearing, Torque Limiter
9	2	36-015-035	Spacer, Torque Limiter, Orange
10	2	36-015-036	Limiter, AWD Modified Torque
11	1	36-015-026	Chicken Wing Mounting Plate
12	4	10-015-225	Bolt, Hex Head, 5/16"-18 x 2-1/4" Long
13	2	36-015-023	Spacer, Torque Limiter
14	1	36-015-019	Telespar Arm
15	2	10-014-050	Bolt, Hex Head, 1/4"-20 x 1/2" Long SS
16	4	10-100-003	Lock Nut, 5/16"-18 SS Nylon
17	2	36-015-017	Plate, AWD Backing
18	1	10-021-437	Bolt, Hex Head 5/8"-11 x 4-3/8" Long
19	1	36-015-043	Clamp
20	2	36-015-016	Split Collar
21	1	36-015-050	Telespar Extension Arm Assembly
22	1	36-015-052	Pivot Pin & Locking Assembly
23	1	36-015-042	Variable Lance Stop Assembly
24	1	36-015-031	Handle
25	1	36-015-044	Shield, APS Splash (1.50" Size)

Lance Stop

#36-015-042 Parts List



Parts List

Item #	Qty.	Part #	Part Description
1	1	36-015-011	Lance Stop Body
2	1	36-015-009	Lance Stop Cover Plate
3	1	36-015-008	Lance Stop Insert (includes up to 6 stop sizes)
4	1	36-015-007	Lance Stop Retainer Latch
5	1	36-015-006	Lance Guide Tube
6	1	36-015-010	Lance Stop Cover
7	1	60-072-032	Pin
8	5	10-001-075	SHCS 1/4"-20 x 3/4" Long
9	2	30-001-025	O-Ring, 2-025
10	1	30-001-154	O-Ring, 2-154
11	1	30-001-155	O-Ring, 2-155
12	1	36-015-041	Lance Stop Extension Tube