

BJ Back Out Preventers (BJ 305, BJ 310, BJ 320, BJ 340)

Description:

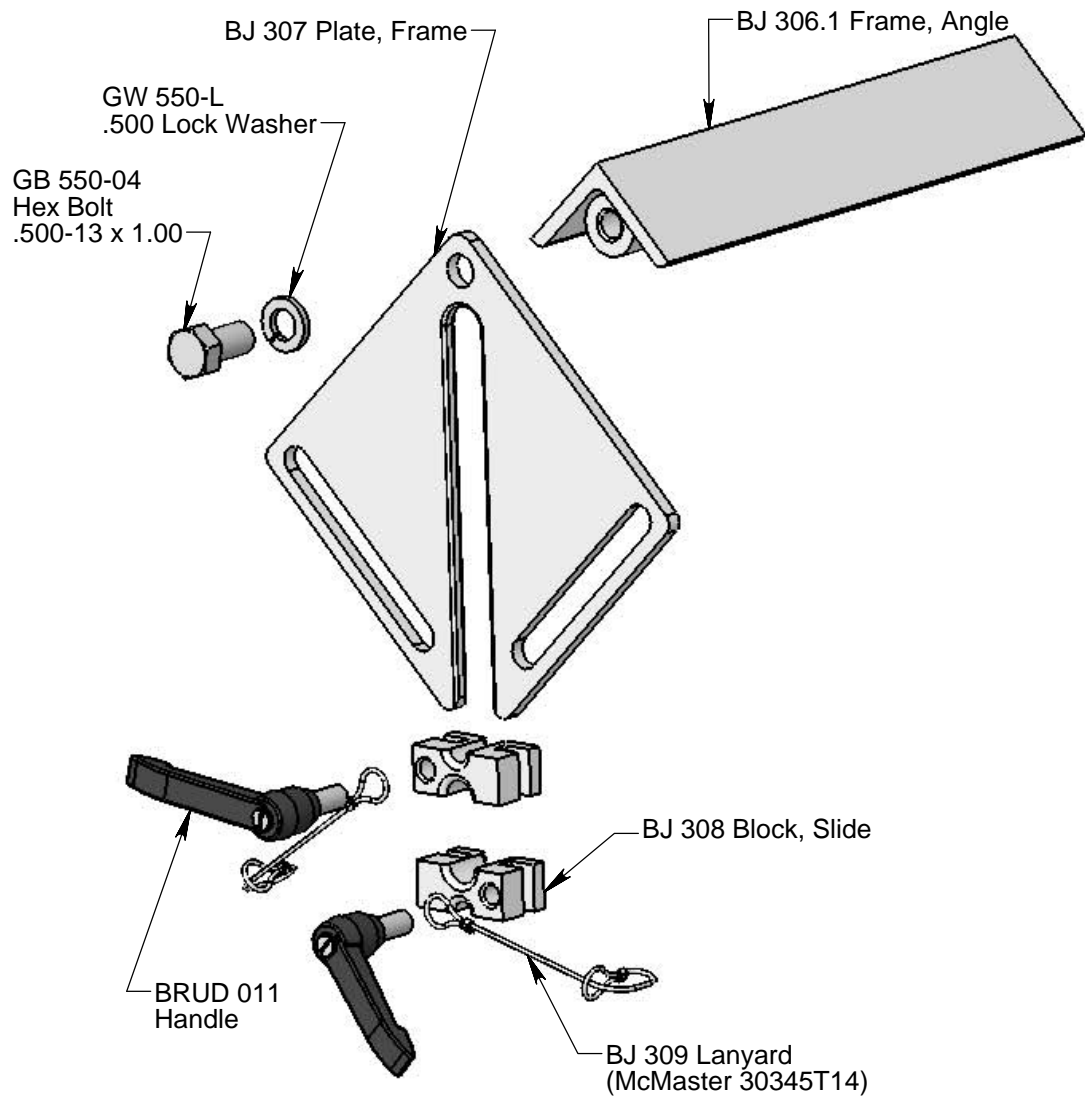
Backout preventers are designed to mount to a pipe and stop tools from backing out due to plugged jets, "hydraulic", or a hose/tool failure. **Note: Backout preventers are not designed to stop the hose or prohibit tools from turning around inside the pipe. Centralizers of sufficient diameter or stingers of sufficient length should always be used with any backout preventer to prevent tools from turning around inside the pipe.**

The BJ 305 is designed for small pipes and small diameter cleaning tools. The BJ 305 is clamped to the pipe with a chain vise grip provided by the user. It has replaceable slide blocks with small inside diameters to catch small diameter tools.

The BJ 310 is designed for flangeless pipes 4 to 8 inches in diameter. A ratchet mechanism is used to tighten a nylon strap around the outer diameter of the pipe. A slot in the plate allows the hose to slide freely, but stops tools with an outer diameter of 1.5 inches or larger from backing out of the pipe.

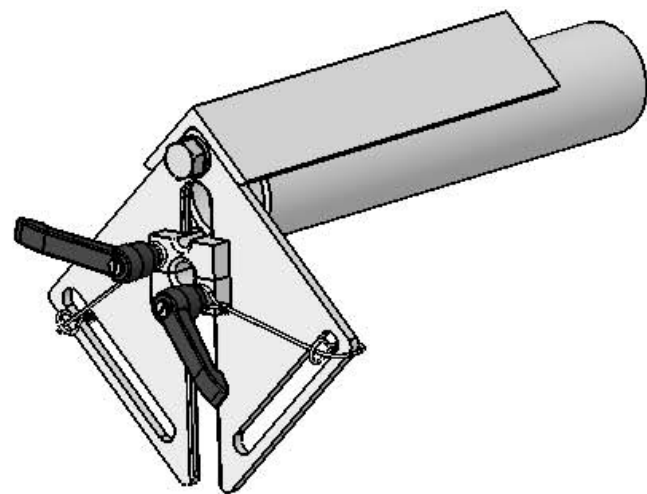
The BJ 320 is designed for flanged pipes with a bolt circle of 5-17 inches in diameter. Slots in the BJ 318 Strap allow for bolting the assembly to various size flanges. A hinge plate is pivoted around the hose forming a semi-circle that allows the hose to slide freely, but prevents tools from backing out of the pipe. The BJ 325 is an extension kit for the BJ 320 allowing it to be used on flanged pipes with a flange bolt circle of 15 to 36 inches in diameter. The BJ 325 may also be used in conjunction with the BJ 340 for flangeless pipes of 15 to 32 inches in diameter.

The BJ 340 is a no flange kit that allows the BJ 320 to be used on flangeless pipes 6 to 14 inches in diameter. The BJ 340 consists of a frame weldment and a chain. The chain is placed around the outer diameter of the pipe and hooked into a tensioning bolt mounted to the frame weldment. A hand nut is used to tighten the chain. The BJ 320 then utilizes the frame weldment and a chain link opposite the frame weldment for mounting.



BJ 305 Backout Preventer

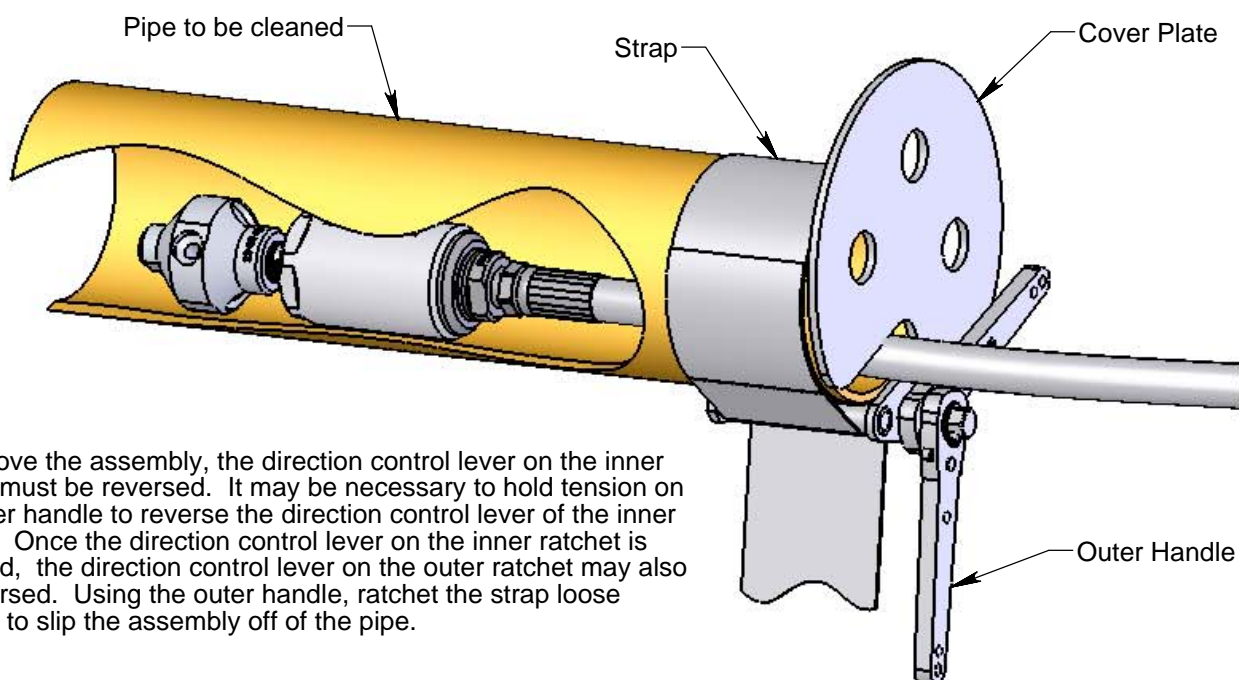
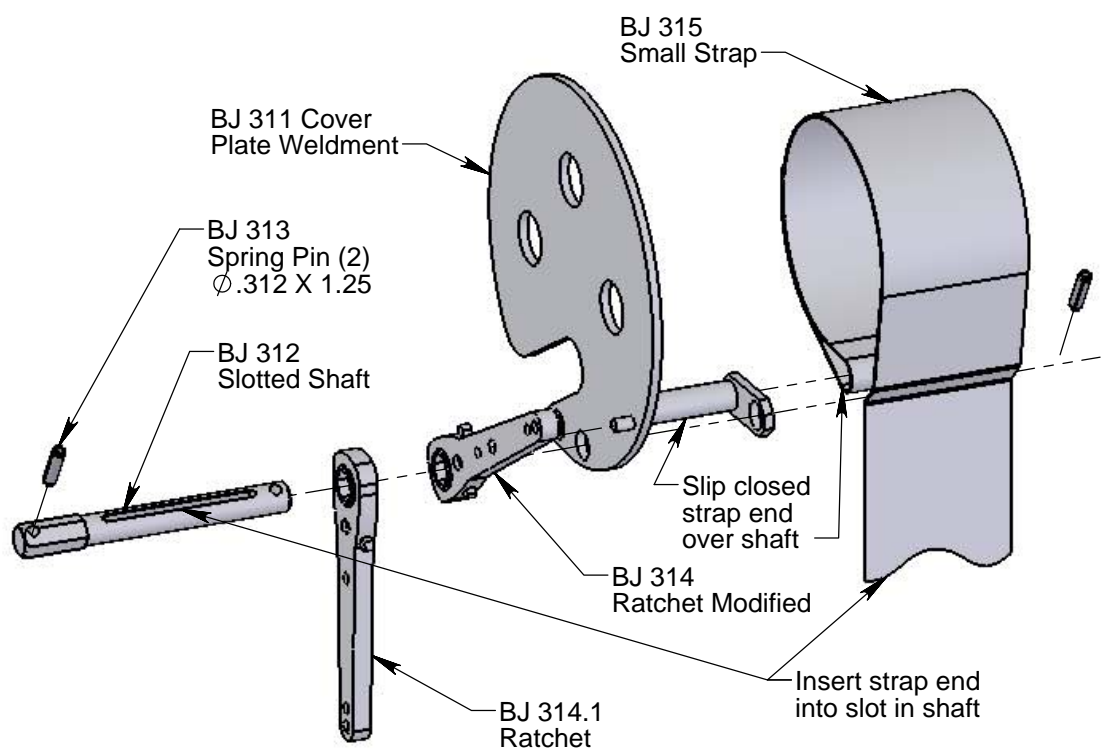
1. Bolt Plate to Angle.
2. Select proper size of Slide Block and place first half onto Plate. Slide hose into slot, install other half of Slide Block.
3. Clamp Angle Frame to pipe using chain type vise grip. Plate can be spaced back from end of pipe as desired.



ASSEMBLED VIEW ON PIPE

BJ 310 Backout Preventer:

1. Insert swivel and hose into the slot on the cover plate and through the loop in the strap.
2. Insert the swivel into the pipe and slip the strap of the assembly over the end of the pipe. Check that the cover plate is against the end of the pipe. Orientation of the assembly may be adjusted so that water/debris drains from either the slot or holes in the cover plate.
3. Tighten the assembly onto the pipe by ratcheting the outer handle to take the slack out of the strap around the pipe. The inner ratchet direction control lever should be set to keep tension in the strap during tightening. Insure that the assembly is sufficiently tight to prevent slippage before operating tools.

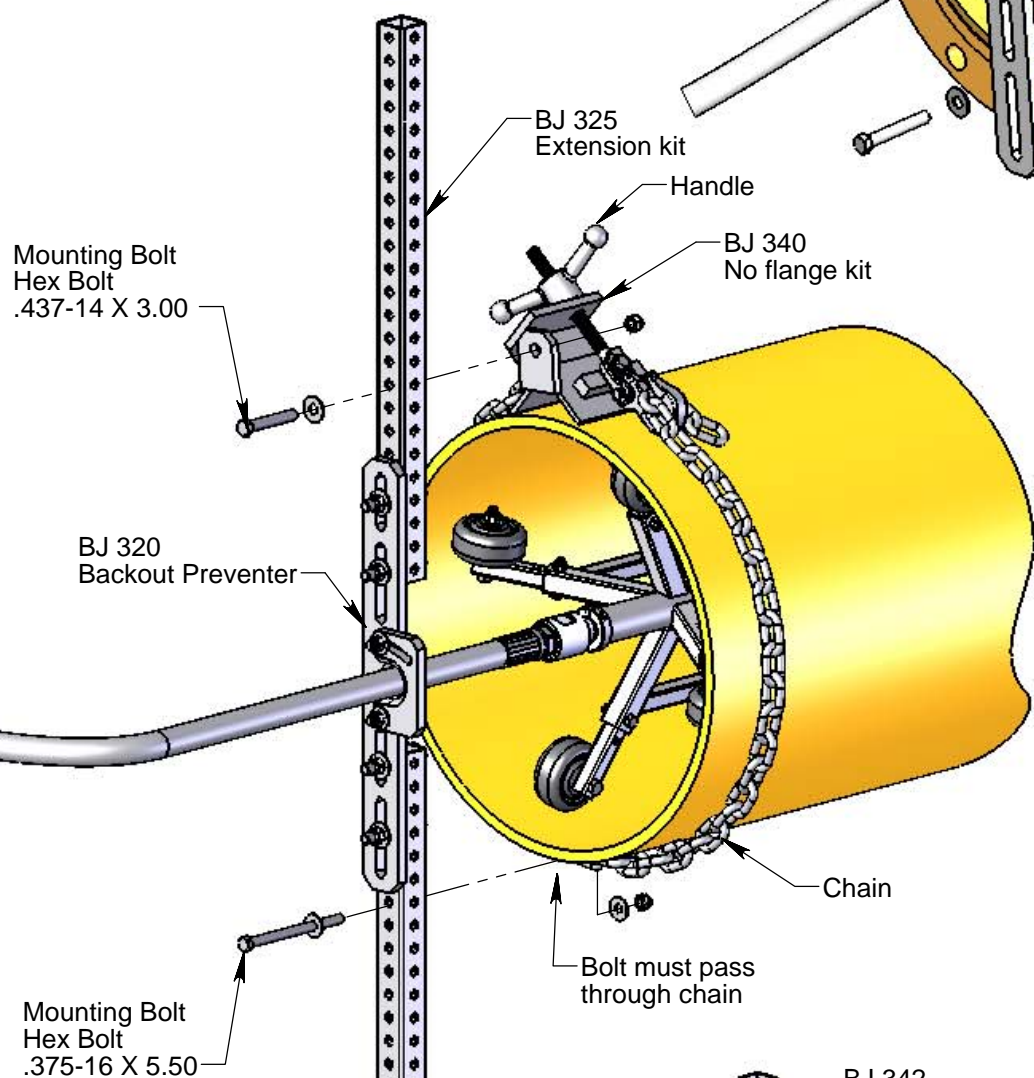
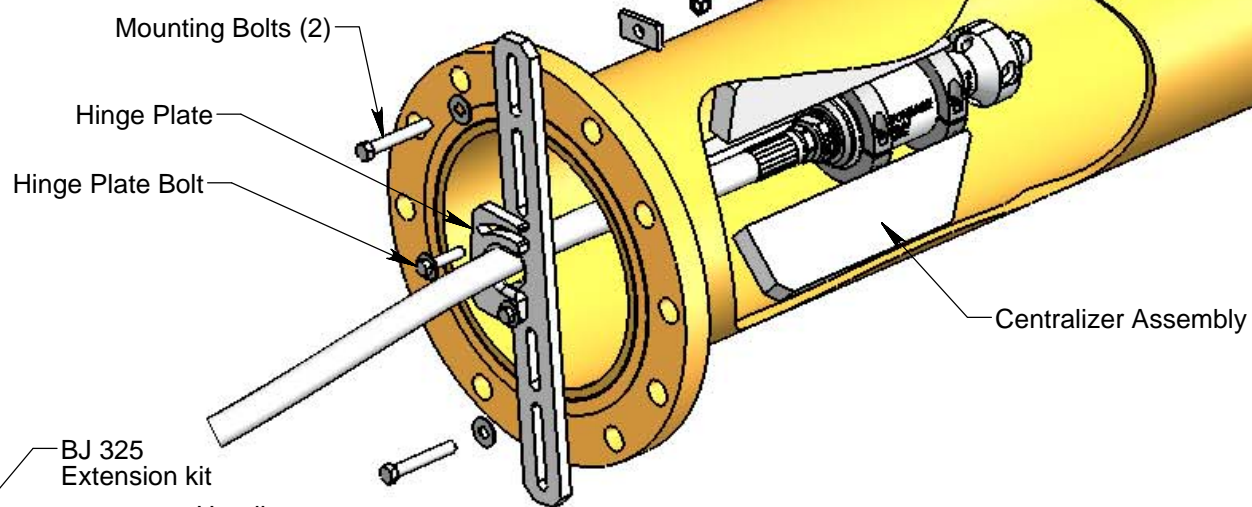
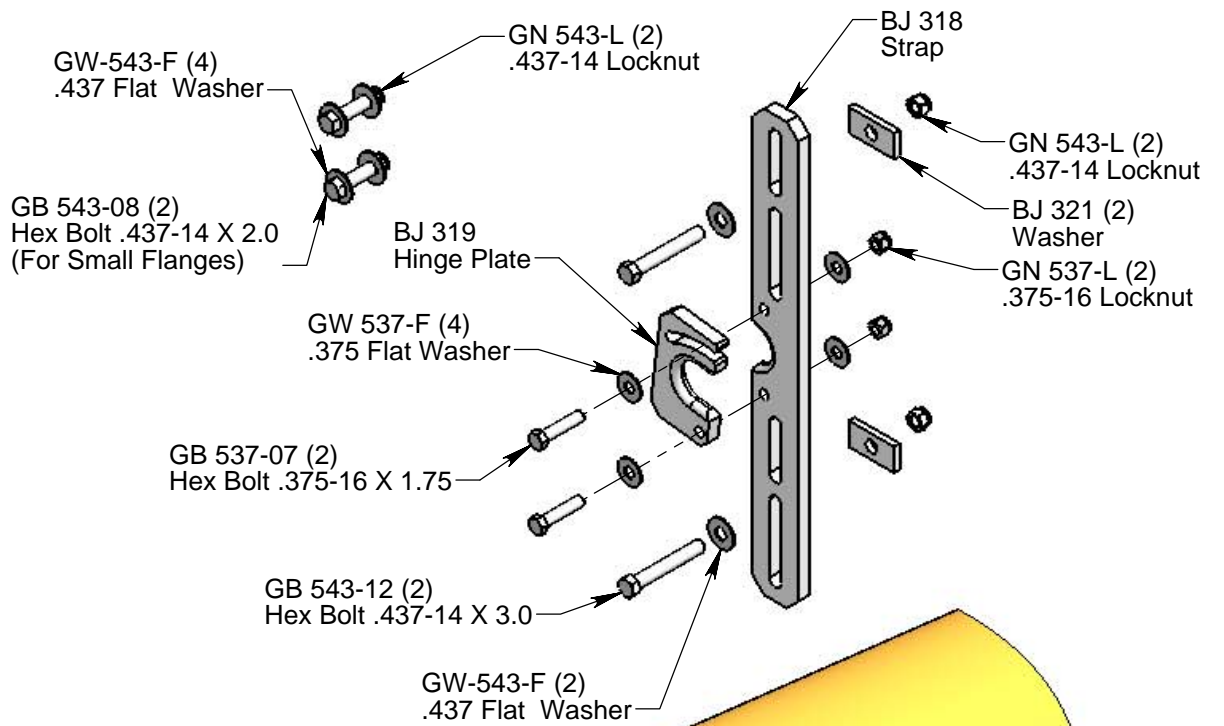


4. To remove the assembly, the direction control lever on the inner ratchet must be reversed. It may be necessary to hold tension on the outer handle to reverse the direction control lever of the inner ratchet. Once the direction control lever on the inner ratchet is reversed, the direction control lever on the outer ratchet may also be reversed. Using the outer handle, ratchet the strap loose enough to slip the assembly off of the pipe.

BJ Back Out Preventers

BJ 320 Backout Preventer:

1. Insert tool, with high pressure hose installed, into pipe.
2. Bolt the BJ 320 assembly to the pipe flange using two mounting bolts, washers, and locknuts.
3. Pivot the hinge plate around the hose until it is snug on the hose outer diameter. Tighten the hinge plate bolt.
4. Verify that the BJ 320 is securely bolted to the pipe flange and that the hinge plate is properly secured before operating tools.
5. To remove the assembly, loosen the hinge plate bolt and pivot the hinge plate down to free the hose.
6. Loosen the two mounting bolts and remove the BJ 320 assembly from the pipe flange.
7. Remove the tool from the pipe.



BJ 340 Backout Preventer:

1. Install the BJ 340 no flange kit over the end of the pipe to be cleaned and tighten the chain around the pipe by screwing the handle clockwise.
2. Insert tool (and centralizer) with attached high pressure hose into the pipe to be cleaned.
3. Bolt the BJ 320 and BJ 325 assembly to the weldment and chain using the two mounting bolts, washers, and locknuts.
4. Pivot the hinge plate around the hose until it is snug on the hose outer diameter. Tighten the hinge plate bolt.
5. Verify that the chain is sufficiently tight to prevent slippage. Also check that the BJ 320 is securely bolted to the weldment and chain, and that the hinge plate is properly secured before operating tools.
6. To remove the assembly, loosen the hinge plate bolt and pivot the hinge plate down to free the hose.
7. Loosen the two mounting bolts and remove the BJ 320 assembly from the BJ 340 no flange kit.
8. Remove the tool from the pipe.
9. Remove the BJ 340 from the pipe.

